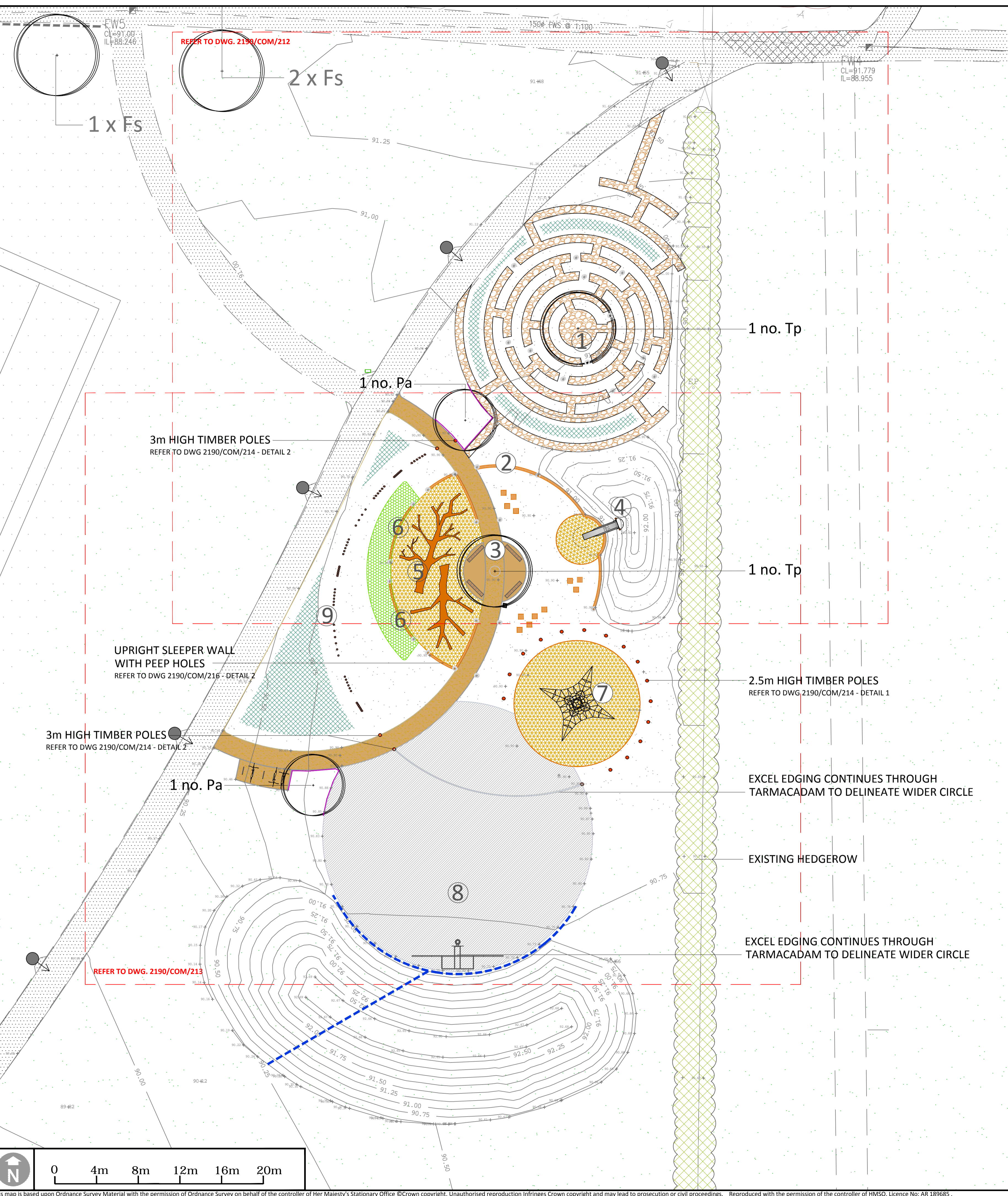


2: Tadpole Farm 2190/DIA CAD Common Construction Drawings 2190 COM 205C 212-217 NEAP Proposals and Details 210815.dwg
 Drawn by GB & Checked by JG
 © David Jarvis Associates 2013



PLAY SCHEDULE

- 1 **EXPLORATION COBBLED MAZE AREA**
 - WITH FOCAL CENTRAL TREE (Tilia platyphyllos 'Aurea')
 - REFER TO DWG. 2190/COM/209 FOR COBBLE SURFACE DETAIL
 - REFER TO DWG. 2190/COM/208 FORTREE PIT DETAILS
- 2 **TIMBER WALL WITH CRAWL THROUGH HOLES**
 - BUILT FROM UPRIGHT SLEEPERS WITH CIRCULAR HOLES CUT INTO THE WALL FOR CRAWLING AND LOOKING THROUGH
 - VARYING HEIGHTS UP TO 2m HIGH
 - REFER TO DWG. 2190/COM/216 FOR DETAILS
- 3 **CENTRAL SEATING AREA**
 - WITH FOCAL TREE (Tilia platyphyllos 'Aurea') AND SEATING
 - REFER TO DWG. 2190/COM/208 FOR TREE PIT DETAILS
 - REFER TO DWG. 2190/COM/211 FOR BENCH FIXING DETAILS
- 4 **EARTH MOUNDING AND EMBANKMENT SLIDE**
 - SLIDE - PLAYDALE EMBANKMENT SLIDE 1.5m HIGH (EWSL)
- 5 **FELLED PLAY TREES**
 - PLAY TREE - Sourced from <http://www.ruskins.co.uk/play-trees>
 - INSTALLED TO SUPPLIERS SPECIFICATION
 - BARK SAFETY SURFACE AREA ENCLOSED BY 1-1.5m HIGH UPRIGHT TIMBER SLEEPER WALL WITH CIRCULAR PEEP HOLES CUT OUT IN A RANDOM PATTERN
 - REFER TO DWG. 2190/COM/216 FOR DETAILS
 - REFER TO DWG. 2190/COM/209 - DETAIL 5 FOR BARK SAFETY SURFACE
- 6 **1.5m HIGH TIMBER UPRIGHT SLEEPER WALLS WITH CLIMBING GRIPS**
 - GRIPS - Sourced from www.climbklshop.com
 - KIDS PLAYGROUND REACHES SET 1 AND 2 OR SIMILAR
 - REFER TO DWG. 2190/COM/217
- 7 **CLIMBING NET**
 - PLAYDALE CLIMBERS ACTIVITY NET- 4m HIGH SINGLE NET
 - REFER TO DWG. 2190/COM/209 - DETAIL 5 FOR BARK SAFETY SURFACE
- 8 **TARMAC KICK ABOUT AREA**
 - WITH KOMPAN CLASSIC MULTI GOAL 9m WIDE (FRE1212) COMBINED FOOTBALL GOAL AND BASKETBALL HOOP
 - REFER TO DWG. 2190/COM/209 - DETAIL 2 FOR TARMACADAM SURFACE
- 9 **STEPPING LOGS**
 - THREE DIFFERENT HEIGHTS - 100mm/200mm/300mm
 - REFER TO DWG. 2190/COM/215

PLANT SCHEDULE

TREES

CODE	SPECIES	ROOT	GIRTH (cm)
Pa	Prunus avium	RB	20-25
Tp	Tilia platyphyllos 'Aurea'	RB	20-25

For tree planting details refer to dwg. 2190/COM/207

BULBS

SPECIES	DENSITY %	NUMBER
Galanthus nivalis	25	450
Hyacinthoides non-scripta	25	450
Fritillaria meleagris	25	450
Cyclamen hederifolium	25	450

To be scattered randomly at 15 per m².

SPECIES RICH GRASSLAND

Refer to the plant schedule on dwg. 2190/COM/202 for details.

- REFER TO DWG. 2190/COM/208 FOR ALL TREE PIT DETAILS.

KEY

- PROPOSED PLANTING**
- TREES - REFER TO PLANT SCHEDULE
 - SPECIES RICH GRASSLAND - REFER TO PLANT SCHEDULE
 - BULB PLANTING - REFER TO PLANT SCHEDULE
 - ROOT PROTECTION BARRIERS - HY-TEX ROOT BARRIER C3, DEPTH TO BE AT LEAST 300MM DEEPER THAN ANY ADJACENT SERVICES AND LAID IN ACCORDANCE WITH MANUFACTURERS SPECIFICATION
- PROPOSED SURFACING**
- COBBLES - REFER TO DWG. 2190/COM/209 - DETAIL 4 FOR COBBLE PATH SURFACE
 - PROPOSED RESIN BOUND GRAVEL - REFER TO DWG. 2190/COM/209 - DETAIL 1&3 FOR RESIN BOUND GRAVEL SURFACE
 - TARMACADAM KICK ABOUT AREA - REFER TO DWG. 2190/COM/209 - DETAIL 2 FOR TARMACADAM SURFACE
 - BARK SAFETY SURFACE - REFER TO DWG. 2190/COM/209 - DETAIL 5 FOR BARK SAFETY SURFACE
 - GRASS SAFETY MATTING - PLAYSMAAT UK 'SMART PLAY SAFETY SURFACING' - SECURE TO MANUFACTURERS RECOMMENDATIONS
 - REINFORCED GRASS AREA - TERRAZO GRASSPOTTECK REINFORCED PROTECTION MESH, 11MM THICKNESS. - SECURE TO MANUFACTURERS RECOMMENDATIONS
- PROPOSED EDGINGS**
- FLAT TOP CONCRETE KERB (50 x 150mm) - REFER TO DWG. 2190/COM/209 - SURFACING DETAILS
 - TIMBER EDGING STRIP - REFER TO DWG. 2190/COM/209 - SURFACING DETAIL 5
 - ALUXXCEL ALUMINIUM EDGING (AE75M) - REFER TO DWG. 2190/COM/209 - SURFACING DETAIL 2
- PROPOSED FURNITURE**
- SEATING - WOODSCAPE TYPE 6 BENCH, 2000mm LONG TO BE SECURED USING DETAIL - REFER TO DWG. 2190/COM/211
 - CYCLE STANDS - MARSHALLS OLLERTON FIN STAINLESS STEEL CYCLE STAND 800mm HIGH x 1020mm WIDE - ROOT FIX INTO A CLASS DC-4 / FND4 CONCRETE FOUNDATION AND TO MANUFACTURERS RECOMMENDATIONS
 - LITTER BIN - WOODSCAPE LBS12 LOCKABLE SQUARE HARDWOOD BIN - INSTALLED INTO A CLASS DC-4 / FND4 CONCRETE FOUNDATION AND TO MANUFACTURERS RECOMMENDATION
 - DOG BIN - WYBONEL WDB/LIFO FRONT OPENING DOG WASTE BIN - SECURE WITH GROUND ANCHOR POST INTO A CLASS DC-4 / FND4 CONCRETE FOUNDATION AND TO MANUFACTURERS RECOMMENDATIONS
- PROPOSED PLAY FEATURES**
- PLAY FEATURE - REFER TO PLAY SCHEDULE FOR DETAILS
 - UPRIGHT TIMBER SLEEPERS - 150mm depth x 250mm wide x various lengths - USED FOR ALL PLAY / CLIMB / RETAINING WALLS
 - TIMBER STEPPING LOGS - 150mm WIDE X THREE DIFFERENT HEIGHTS - 100mm/200mm/300mm - REFER TO DWG. 2190/COM/215
 - TIMBER POLES - www.totalpoles.co.uk (MACHINE PLAY AREA POLES) - 200mm WIDE POLES X 2.5m HIGH - REFER TO DWG. 2190/COM/214 - DETAIL 1
 - TIMBER POLES - www.totalpoles.co.uk (MACHINE PLAY AREA POLES) - 200mm WIDE POLES X 3m HIGH - REFER TO DWG. 2190/COM/214 - DETAIL 2
 - PROPOSED BOULDERS - LOCALLY SOURCED STONE APPROX. SIZE UP TO 0.5m WIDE x 1-1.5m HIGH ABOVE GL. - REFER TO DWG. 2190/COM/214 - DETAIL 3
 - INFORMAL SLEEPER STACKS FOR SEATING AND CLAMBERING - REFER TO DWG. 2190/COM/214 - DETAIL 4
- PROPOSED DRAINAGE**
- LAND DRAIN - REFER TO DWG. 2190/COM/219

Notes

Drawing Revision

Rev	Date	Description
C	210815	LEVELS AMENDED, FIELD DRAIN ADDED
B	160715	CONCRETE CLASS OF FOUNDATIONS ADDED
A	120215	LEVELS AMENDED

Drawing Status

ISSUED FOR CONSTRUCTION

DAVID JARVIS ASSOCIATES

DAVID JARVIS ASSOCIATES LIMITED
 1 Tennyson Street Swindon Wiltshire SN1 5DT
 Tel: 01793 612173 Fax: 01793 613625
 Email: mail@davidjarvis.biz

Client
CREST NICHOLSON

Project
**TADPOLE FARM
 COMMON APPLICATION TENDER**

Drawing Title
**NEAP
 LANDSCAPE PROPOSALS**

Scale 1:200	Sheet Size A1	Date March 2014
Drawing No. 2190/COM/205	Revision C	